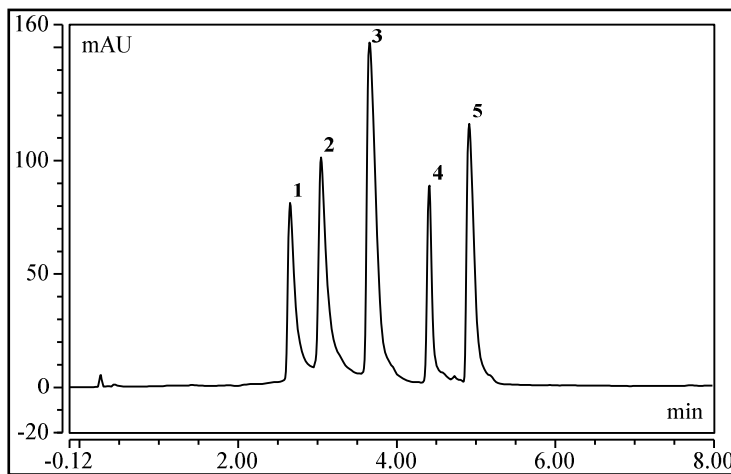


ProSwift™ RP-1S
4.6 x 50 mm
Product No. 064297

Date: 23-Dec-22 02:58
Serial No. : 003581
Lot No. : 02211130

Mobile Phase A: 0.10% TFA in 95/5 Water/Acetonitrile (v/v)
Mobile Phase B: 0.10% TFA in 95/5 Acetonitrile/Water (v/v)
Gradient: 1% to 30% B in 8 minutes
Flow Rate: 1.5 mL/min
Temperature: 30 °C
Detection: UV 214 nm
Injection Volume: 10 µL
Storage Solution: 100% Acetonitrile



No.	Peak Name	Ret.Time (min)	Asymmetry (EP)	Resolution (EP)	Peak Width (50%) (min)	Concentration
1	Met-Enkephalin	2.65	n.a.	2.33	0.09	30
2	Leu-Enkephalin	3.04	n.a.	3.13	0.11	30
3	Angiotensin II	3.65	2.7	4.87	0.12	30
4	Physalaemin	4.41	1.5	3.68	0.06	30
5	Substance P	4.91	2.3	n.a.	0.10	30

QA Results:

<u>Component</u>	<u>Parameter</u>	<u>Specification</u>	<u>Results</u>
	Pressure	<=1210	732
Physalaemin	Asymmetry	0.95-1.7	Passed
Substance P	PW (50%)	<=0.11	Passed
Substance P	Ret. Time	4.62-5.19	Passed
T1/T2	Ret.Time Ratio	1.19-1.41	Passed

T1 = Ret.Time of Substance P minus Physalaemin

T2 = Ret.Time of [Leu]-enkephalin minus [Met]-enkephalin

Production Reference:

Datasource: MonoBio7
Directory: Production\MonoA\MonoA_6\RP-1S
Sequence: 064297_2022-011-130_TL
Sample No.: 57

Chromleon™ Thermo Fisher Scientific